



# Georgian Railway 1Q17 update

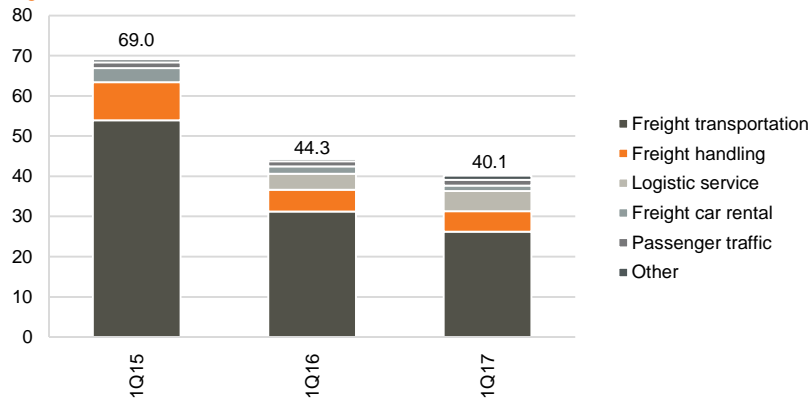
Georgia | Transportation  
Georgian Railway  
July 5, 2017

S&P / B+ / Outlook Stable  
Fitch / B+ / Outlook Stable

GR released 1Q17 unaudited results. Revenue declined 9.4% y/y, from an already low base, to US\$ 40.1mn due to lower freight volumes and an unfavorable shift in freight category/direction mix. Operating expenses decreased 3.4% y/y to US\$ 36.4mn, leading to an 8.7% y/y decline in adjusted EBITDA to US\$ 17.6mn, with the adjusted EBITDA margin at 43.9%. Lower adjusted EBITDA and higher debt from financing the purchase of four new passenger trains resulted in a deterioration of the adjusted EBITDA coverage ratio from 1.9x in 1Q16 to 1.7x in 1Q17.

**In 1Q17, freight transportation and freight handling revenues declined 16.1% y/y to US\$ 26.2mn and 6.1% y/y to US\$ 5.1mn, respectively.** The downward trend persisted in the freight car rental category as well, with revenues down 23.7% y/y to US\$ 1.4mn. On the other hand, logistic service and passenger traffic revenues grew 25.1% y/y to US\$ 5.0mn and 15.6% y/y to US\$ 1.5mn, respectively.

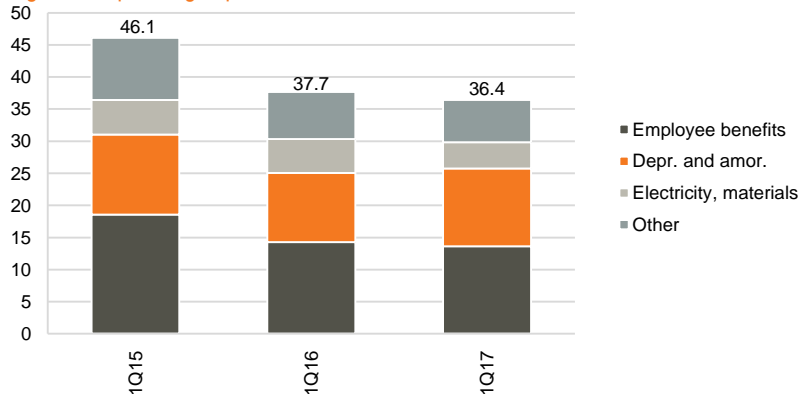
Figure 1: Revenue, US\$ mn



Source: Company data

**1Q17 operating expenses declined 3.4% y/y to US\$ 36.4mn.** Electricity, consumables and maintenance expense posted the largest drop (-22.4% y/y to US\$ 4.1mn), while employee benefits expense was down 4.6% y/y to US\$ 13.6mn.

Figure 2: Operating expenses, US\$ mn



Source: Company data

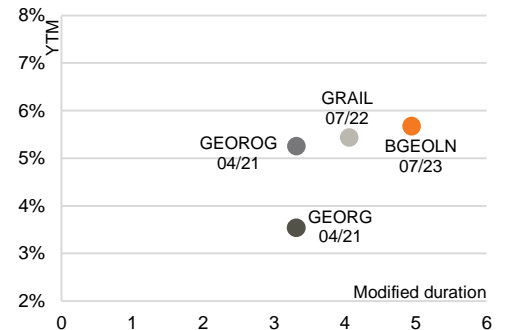
**Nino Papava**

Head of Investment Research | n.papava@gt.ge | +995 32 2401 111 ext. 4693

**David Niniklashvili**

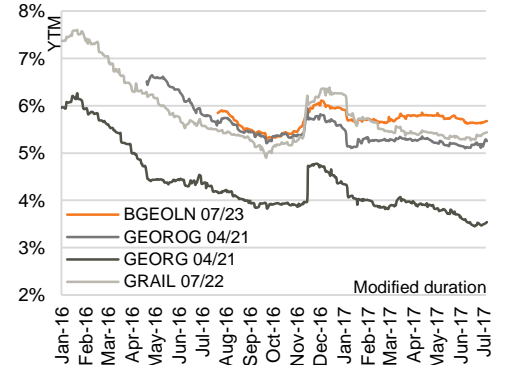
Senior Analyst | dniniklashvili@gt.ge | +995 32 2401 111 ext. 8137

Figure 3: Georgian Eurobond universe



Source: Bloomberg

Figure 4: Georgian Eurobonds



Source: Bloomberg

Table 1: Key financials (US\$ '000) and margins

	1Q16	1Q17	Change, y/y
Revenue	44,281.3	40,117.1	-9.4%
EBITDA	19,291.3	17,621.8	-8.7%
EBITDA margin	43.6%	43.9%	30 bps
Adjusted EBITDA	19,291.3	17,621.8	-8.7%
Adjusted EBITDA margin	43.6%	43.9%	30 bps
EBIT	8,538.1	5,514.7	-35.4%
EBIT margin	19.3%	13.7%	-560 bps
Net income	14,371.1	35,704.3	148.4%
Net profit margin	32.5%	89.0%	5650 bps
Assets	1,294,449.5	1,313,723.6	1.5%
Equity	636,097.4	692,124.6	8.8%
Liabilities	658,352.1	621,599.1	-5.6%

Source: Company data

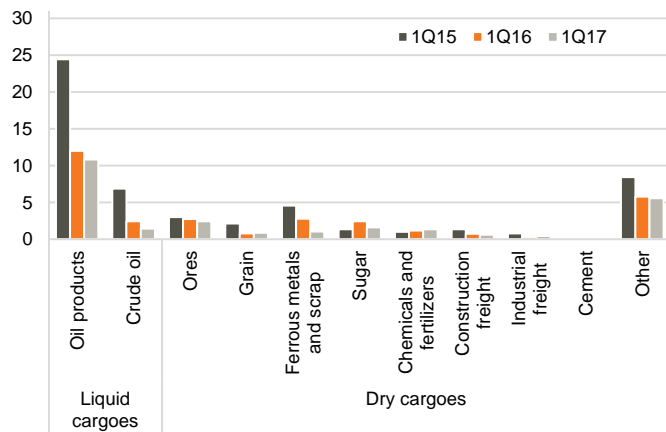
US\$-GEL	1Q15	1Q16	1Q17
Period-end	2.228	2.368	2.445
Average	2.073	2.435	2.603

Source: NBG



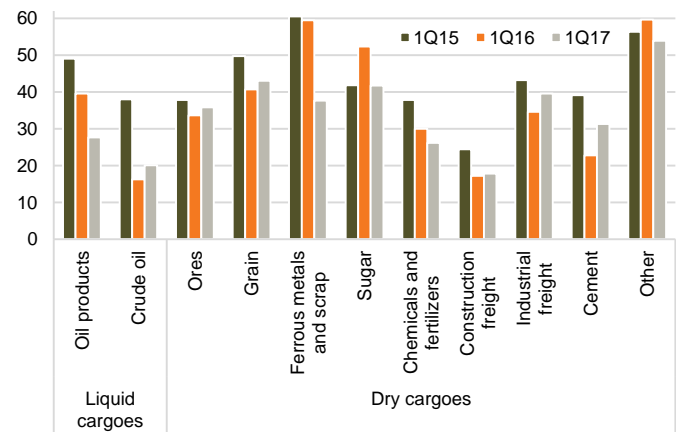
The main driver of the decrease in freight traffic was ferrous metals and scrap transportation, down 62.3% y/y to US\$ 1.1mn due to lower shipments of oil and gas pipes (a profitable freight category) to Azerbaijan. Transportation revenue from oil products, the single largest freight category, decreased 9.7% y/y to US\$ 10.8mn on the back of lower fuel diesel volumes from Azerbaijan, which was partially offset by higher heavy fuel and gasoil volumes from Kazakhstan. Crude oil transportation dropped 40.1% y/y to US\$ 1.4mn, despite the substantial shift in freight origin from Kazakhstan to the more profitable Azerbaijan. Ores transportation decreased 10.7% y/y to US\$ 2.4mn, as there were no shipments from Brazil, a profitable source, which accounted for 14% of ores volume in 1Q16. Sugar transportation revenue shrank 34.2% y/y to US\$ 1.6mn due to lower shipments of cane sugar from Brazil to Azerbaijan and Armenia. Chemicals and fertilizers, industrial freight, and grain were the only categories that posted increases, but together they accounted for only 10.1% of freight transportation revenues in 1Q17.

Figure 5: Freight transportation revenue, US\$ mn



Source: Company data

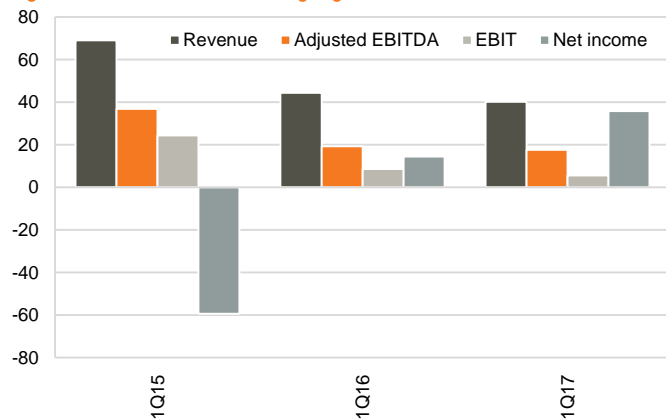
Figure 6: Average revenue per 1,000 ton-km, US\$



Source: Company data

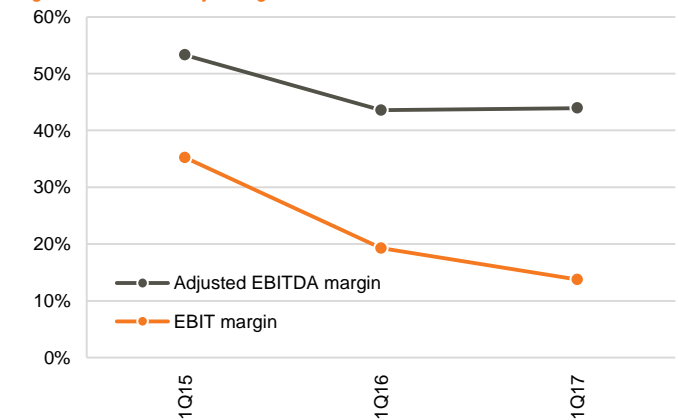
1Q17 adjusted EBITDA declined 8.7% y/y to US\$ 17.6mn, while the adjusted EBITDA margin improved slightly to 43.9% (43.6% in 1Q16). Higher depreciation expense weighed on EBIT, which dropped 35.4% y/y to US\$ 5.5mn. Strengthening of GEL against US\$ since end-FY16 led to a non-cash FX gain of US\$ 34.3mn, accounted for as finance income, which propped up net income at US\$ 35.7mn.

Figure 7: Income statement highlights, US\$ mn



Source: Company data

Figure 8: Profitability margins

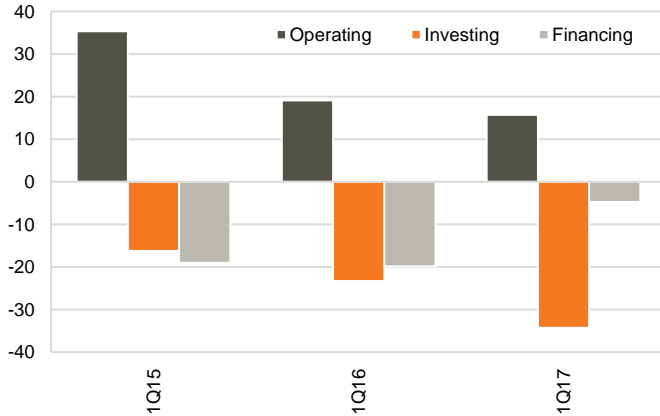


Source: Company data



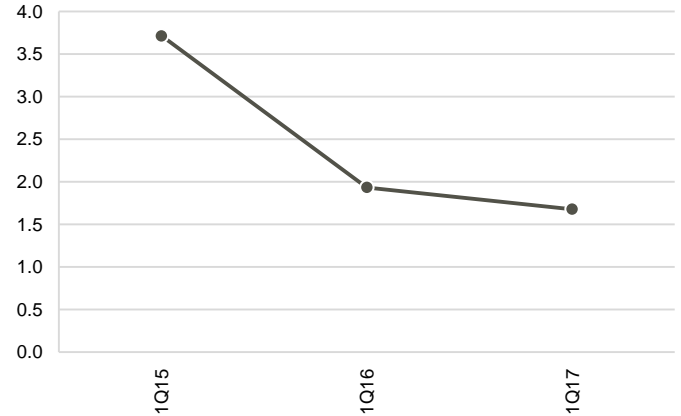
Operating cash was down 17.6% y/y to US\$ 15.7mn, partially due to higher VAT payments for the purchase of passenger trains. Investment of US\$ 17.2mn in new passenger trains was one of the reasons behind the 41.5% y/y spike in capital spending to US\$ 36.4mn. The increase in debt from financing the purchase contributed to a deterioration of the adjusted EBITDA coverage ratio from 1.9x in 1Q16 to 1.7x in 1Q17. Modernization project expenditures were also a major part of investing outflows.

Figure 9: Cash flows, US\$



Source: Company data

Figure 10: Adjusted EBITDA coverage ratio



Source: Company data



## Disclaimer

This document is strictly confidential and has been prepared by JSC Galt & Taggart ("Galt & Taggart"), a member of JSC Bank of Georgia group ("Group") solely for informational purposes and independently of the respective companies mentioned herein. This document does not constitute or form part of, and should not be construed as, an offer or solicitation or invitation of an offer to buy, sell or subscribe for any securities or assets and nothing contained herein shall form the basis of any contract or commitment whatsoever or shall be considered as a recommendation to take any such actions.

Galt & Taggart is authorized to perform professional activities on the Georgian market. The distribution of this document in certain jurisdictions may be restricted by law. Persons into whose possession this document comes are required by Galt & Taggart to inform themselves about and to observe any and all restrictions applicable to them. This document is not directed to, or intended for distribution, directly or indirectly, to, or use by, any person or entity that is a citizen or resident located in any locality, state, country or other jurisdiction where such distribution, publication, availability or use would be contrary to law or regulation or which would require any registration or licensing within such jurisdiction.

Investments (or any short-term transactions) in emerging markets involve significant risk and volatility and may not be suitable for everyone. The recipients of this document must make their own investment decisions as they believe appropriate based on their specific objectives and financial situation. When doing so, such recipients should be sure to make their own assessment of the risks inherent in emerging market investments, including potential political and economic instability, other political risks including without limitation changes to laws and tariffs, and nationalization of assets, and currency exchange risk.

No representation, warranty or undertaking, express or implied, is or will be made by Galt & Taggart or any other member of the Group or their respective directors, employees, affiliates, advisers or agents or any other person as to, and no reliance should be placed on, the fairness, accuracy, completeness or correctness of this document and the information contained herein (and whether any information has been omitted from this document) and no reliance should be placed on it. This document should not be considered as a complete description of the markets, industries and/or companies referred to herein. Nothing contained in this document is, is to be construed as, or shall be relied on as legal, investment, business or tax advice, whether relating to the past or the future, by Galt & Taggart any other member of the Group or any of their respective directors, employees, affiliates, advisers or agents in any respect. Recipients are required to make their own independent investigation and appraisal of the matters discussed herein. Any investment decision should be made at the investor's sole discretion. To the extent permitted by law, Galt & Taggart, any other member of the Group and their respective directors, employees, affiliates, advisers and agents disclaim all liability whatsoever (in negligence or otherwise) for any loss or damages however arising, directly or indirectly, from any use of this document or its contents or otherwise arising in connection with this document, or for any act, or failure to act, by any party, on the basis of this document.

The information in this document is subject to verification, completion and change without notice and Galt & Taggart is not under any obligation to update or keep current the information contained herein. The delivery of this document shall not, under any circumstances, create any implication that there has been no change in the information since the date hereof or the date upon which this information has been most recently updated, or that the information contained in this document is correct as at any time subsequent to the date on which it is supplied or, if different, the date indicated in the document containing the same. No representation or warranty, expressed or implied, is made by Galt & Taggart or any other member of the Group, or any of their respective directors, employees, affiliates, advisers or agents with respect to the accuracy or completeness of such information.

The information provided and opinions expressed in this document are based on the information available as of the issue date and are solely those of Galt & Taggart as part of its internal research coverage. Opinions, forecasts and estimates contained herein are based on information obtained from third party sources believed to be reliable and in good faith, and may change without notice. Third party publications, studies and surveys generally state that the data contained therein have been obtained from sources believed to be reliable, but that there is no guarantee of the accuracy or completeness of such data. Accordingly, undue reliance should not be placed on any such data contained in this document. Neither Galt & Taggart, any other member of the Group, nor their respective directors, employees, affiliates, advisers or agents make any representation or warranty, express or implied, of this document's usefulness in predicting the future performance, or in estimating the current or future value, of any security or asset.

Galt & Taggart does, and seeks to do, and any other member of the Group may or seek to do business with companies covered in its research. As a result, investors should be aware of a potential conflict of interest that may affect the objectivity of the information contained in this document.

This document is confidential to clients of Galt & Taggart. Unauthorized copying, distribution, publication or retransmission of all or any part of this document by any medium or in any form for any purpose is strictly prohibited.

The recipients of this document are responsible for protecting against viruses and other destructive items. Receipt of the electronic transmission is at risk of the recipient and it is his/her responsibility to take precautions to ensure that it is free from viruses and other items of a destructive nature.

**Address:** 79 D. Agmashenebeli Avenue, Tbilisi 0102, Georgia

**Tel:** + (995) 32 2401 111

**Email:** [research@gt.ge](mailto:research@gt.ge)

### Head of Investment Research

Nino Papava | [n.papava@gt.ge](mailto:n.papava@gt.ge)

### Economist

Eva Bochorishvili | [evabochorishvili@gt.ge](mailto:evabochorishvili@gt.ge)

### Economist

Lasha Kavtaradze | [lashakavtaradze@gt.ge](mailto:lashakavtaradze@gt.ge)

### Head of Analytics Unit

Giorgi Iremashvili | [giremashvili@gt.ge](mailto:giremashvili@gt.ge)

### Senior Analyst

David Ninikelashvili | [dninikelashvili@gt.ge](mailto:dninikelashvili@gt.ge)

### Analyst

Mariam Chakhvashvili | [mchakhvashvili@gt.ge](mailto:mchakhvashvili@gt.ge)

### Analyst

Kakhaber Samkurashvili | [ksamkurashvili@gt.ge](mailto:ksamkurashvili@gt.ge)

### Analyst

Bachana Shengelia | [bshengelia@gt.ge](mailto:bshengelia@gt.ge)

### Analyst

Ioseb Kumsishvili | [ikumsishvili@gt.ge](mailto:ikumsishvili@gt.ge)